



Smart-UPS Ultra

Half the size and weight, more power protection, 3x the battery life

The most trusted UPS brand brings you
the future of uninterruptible power

apc.com/smart-ups-ultra

PRESIDIO®

Life Is On

Schneider
Electric

The world's most popular network and server UPS, now half the size and weight



APC Smart-UPS™ Ultra is the industry's first 1U 3kW UPS and smallest and lightest Lithium-ion 5kW UPS

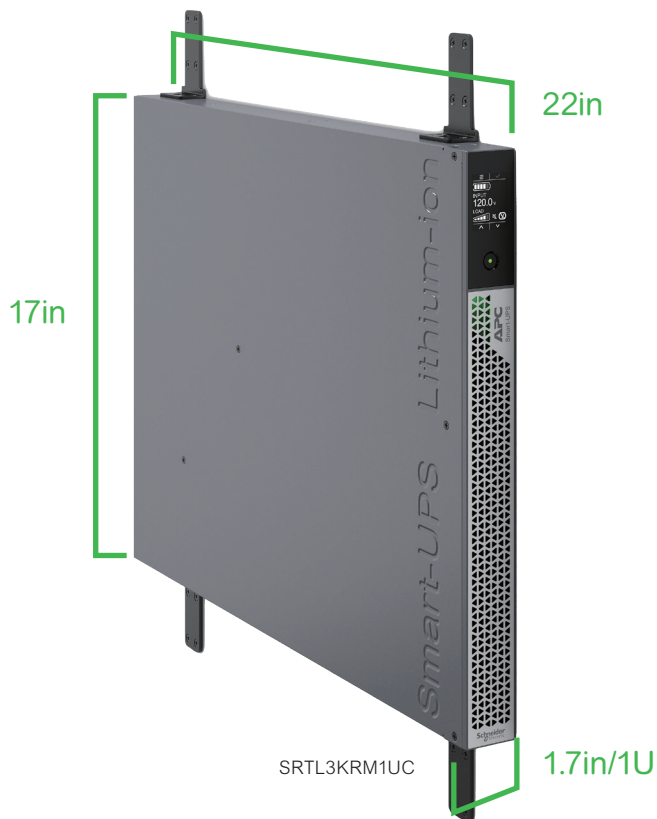
The world's most popular UPS is now available with a compact design and improved battery life. APC's Smart-UPS Ultra offers trusted, premium power protection to ensure network and data availability. Designed for local edge environments and micro data centers, the Smart-UPS Ultra provides consistent and reliable connectivity at the most critical moments. The UPS's light and compact size allow for installation on the wall or ceilings for top-tier flexibility. Increased UPS battery life and lower maintenance service costs provide a lower total cost of ownership over 10 years.

That's Certainty in a Connected World.

Installation flexibility, like never before

All-in-one mounting brackets for rack, tower, wall, ceiling and desk under mount*

With Smart-UPS™ Ultra you can put power protection in places never before possible. At half the size and weight of comparable UPS available on the market today, the mounting brackets can be used in any of the 4 mounting styles: rack, tower, wall and ceiling/ desk under mount. The auto-rotating touch screen display makes switching between horizontal and vertical mounting options instantaneous.



*wall, ceiling and desk under mount not available on SRTL5KRM2UT

Perfect for more installations

When your UPS gives you more power and takes up less space, you have more space for IT equipment

Fits in more applications than ever before

Due to its small size, Smart-UPS Ultra easily supports back office, network infrastructure and IDF/MDF closets. Install the UPS in out-of-the-way mounting options in small edge environments, retail or back offices.

With more power, Smart-UPS Ultra supports larger branch offices, financial institutions, grocery stores and light industrial manufacturing Healthcare installations such as hospitals, labs and remote clinics.

Delivers both power and extended runtime

Smart-UPS Ultra supplies up to 5000 Watts of power protection. With extended runtime options of up to 10 external battery packs, you can get the extended runtime you need for critical applications.

Predictable operational budget

Perfect for limited operational budgets such as Education and Government, UPS with Lithium-ion batteries can remove battery replacement costs up to 3 times! Smart-UPS Ultra batteries last 8-10 years, 3x that of lead acid (VRLA) batteries, which means that under normal operating conditions, the battery will last the life of the UPS.

Perfect for distributed IT

If you have more than one IT site to manage, Smart-UPS Ultra's EcoStruxure Ready remote monitoring and management options make owning a UPS easy, whether one UPS or a fleet of UPS. Remote management allows many tasks to be taken care of without stepping foot in your IT installation. Predictive monitoring and maintenance minimized trips to far-away IT sites.



Smart-UPS Ultra 3kW features

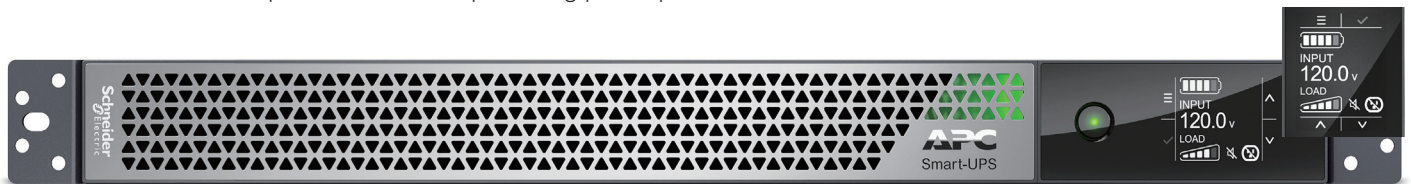
Half the size and weight, remote monitoring management and services with extended runtime options

50% smaller and lighter, 2.5x more power

Smaller & lighter gives you the flexibility to install anywhere: rack (2 post, 4 post), tower, wall, ceiling and desk under-mount options without compromising power protection needs

High resolution LCD

Auto-rotating display



3x the battery life

The Lithium-ion battery lasts 8-10 years (3x VRLA) and won't need to be replaced under normal operating condition, reducing Total Cost of Ownership

LED status indicator

At-a-glance indication of UPS Status

6 outlets in 1U

Including switched outlet group and pigtail NEMA L5-30R

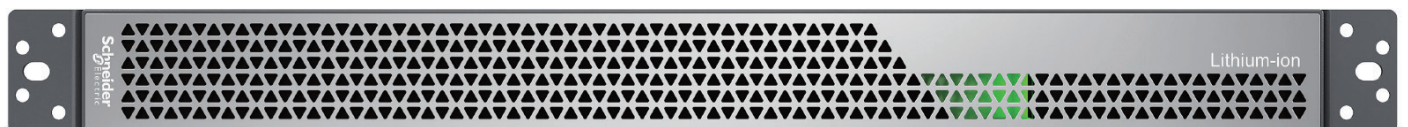
SRTL3KRM1UC



SRTL3KRM1UNC

EcoStruxure Ready

Connect to either the Smart-UPS™ Portal or to EcoStruxure™ IT via the SmartConnect Ethernet Port or embedded network port



Extended Runtime options

Up to 5 external battery packs supported

Smart-UPS Ultra 5kW features

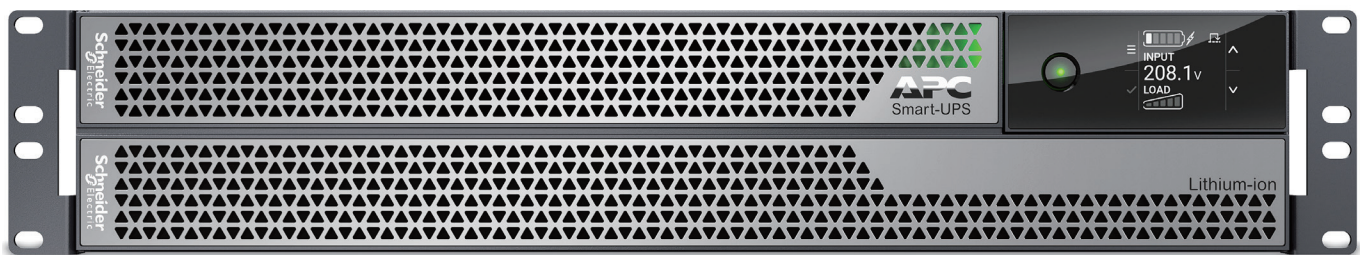
The smallest and lightest Lithium-ion 5kW UPS

30% smaller, 50% lighter, 1.5x more power

Next-gen semiconductor technology gives this UPS 1.5x more power in a 2U footprint.

High resolution LCD

Auto-rotating display with virtual touch keys



LED status indicator

At-a-glance indication of UPS Status

3x the battery life

The Lithium-ion battery lasts 8-10 years (3x VRLA) and won't need to be replaced under normal operating conditions, reducing Total Cost of Ownership

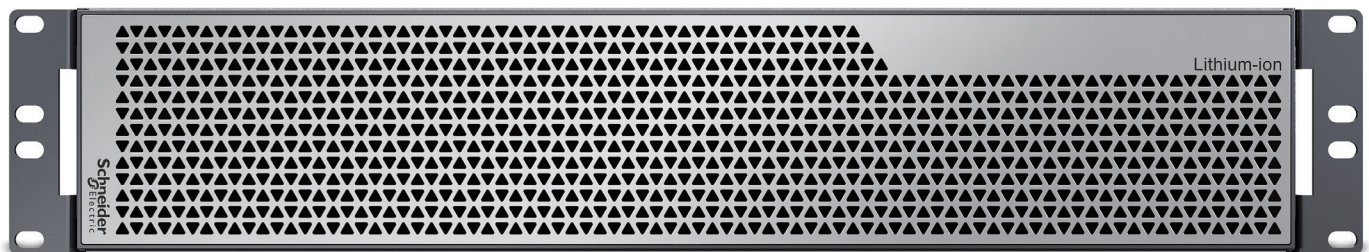


EcoStruxure Ready

Connect to EcoStruxure™ IT via the embedded network port

Extended Runtime options

Up to 10 external battery packs



Smart-UPS management solutions

Enable wireless communication

Save network ports by using WiFi Device

The APC USB Wi-Fi Device (AP9834) is a wireless communication accessory for network-based UPS management that replaces traditional wired network cabling allowing for:

- Faster installation
- Operational efficiency
- Reduced downstream costs
- Removal of cable clutter
- More deployment flexibility

Compatible with Smart-UPS Ultra NC models, Smart-UPS with Network Management Card 3 (AP9641, AP9643), pre-installed or embedded.



PowerChute Business Edition

Built-in manageability for your UPS

Graceful system shutdown of connected equipment during an extended power outage or computer problem.



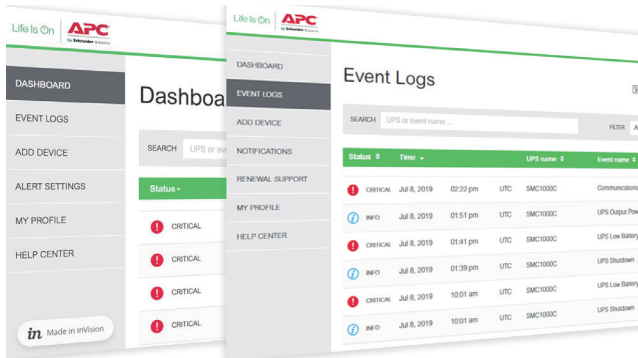
PowerChute Network Shutdown*

Provides graceful network-based shutdown of physical and virtual IT architectures

Network-based, graceful, unattended shutdown and restart of your physical servers and virtual machines during prolonged power disturbances.

EcoStruxure Ready Smart-UPS

Secure monitoring and UPS fleet management.

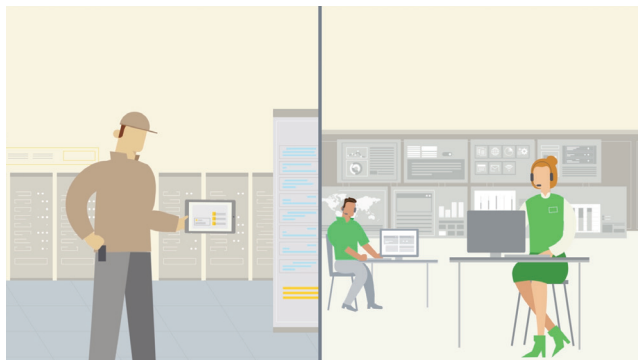


EcoStruxure Ready Smart-UPS

Smart-UPS Web Portal for remote monitoring

Provides visibility directly to the customer to help make proactive decisions and maximize uptime via the SmartConnect Ethernet Port.

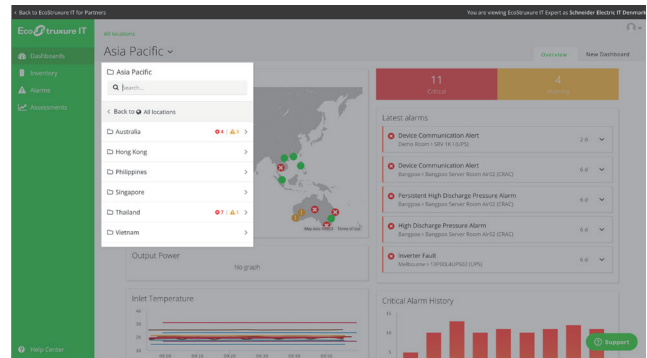
Ideal for small and medium businesses who prefer to self-manage.



EcoStruxure IT Asset Advisor

We advise, you maintain

We provide monitoring services, and you handle the maintenance. This option appeals most to partners who want to use their own on-site service.



EcoStruxure IT Expert

The do-it-yourself advanced monitoring

We empower you to monitor and service customers on your own or provide EcoStruxure IT Expert to your customers who prefer a self-managed option.

Ideal for distributed IT sites and businesses with mixed IT environments.



EcoStruxure IT Monitoring and Dispatch

We monitor and service

We provide monitoring and maintenance services on your behalf. Ideal for IT solution providers who want to add service without additional cost to your business model.

Smart-UPS 3kW accessories

UPS management accessories

- AP9834: APC USB Wi-Fi Device compatible with SRTL3KRM1UNC
- AP9810: dry contact I/O accessory
- AP9335T & AP9335TH: sensor



AP9834

Service bypass panels

- SBP3000RM: APC SERVICE BYPASS PDU, 120V 30AMP W/ (4) NEMA 5-20R AND (1) L5-30R
- SBP3000RM2U: APC Service Bypass Panel- 100-120V; 30A; BBM; L5-30P input; (2) 5-20R (6) 5-15R output

Power distribution units

- AP7900B: APC Rack PDU Switched, 1U, 15A, 120V, (8) NEMA 5-15R
- AP9562: APC Rack PDU, Basic, 1U, 15A, 120V, (10) NEMA 5-15R
- AP9567: APC Rack PDU, Basic, Zero U, 15A, 120V, (14) NEMA 5-15R



AP9562

External battery pack

- SRTL50RMBP1U-LI: 1U external battery pack



SRTL50RMBP1U-LI

Smart-UPS 5kW accessories

UPS management accessories

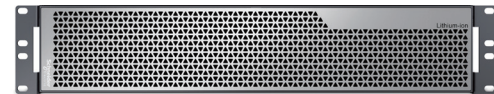
- AP9834: APC USB Wi-Fi Device
- AP9810: dry contact I/O accessory
- AP9335T & AP9335TH: sensor



AP9834

Battery packs:

- SRTL180RM2UBP: APC Smart-UPS Ultra On-Line Lithium ion XBP 180V 2U Rack/Tower



SRTL180RM2UBP

Rail kits:

- SRTRK2: APC Smart UPS SRT 19 inch rail kit for Smart UPS SRTL 5kW

Backplate kit/ Replaceable PDU's:

- SRTL002: APC Smart-UPS Ultra On-Line 5KVA OUTPUT Hardwire KIT
- SRTL004: APC Smart-UPS Ultra On-Line 5KVA PDU 208V (4) L6-20
- SRTL005: APC Smart-UPS Ultra On-Line 5KVA PDU 208V (2)L6-30 (2)L6-20 Pigtail

Service bypass panels:

- SBP5000RMT2U: APC service bypass panel — 200/208/240 V; 30 A; BBM; L6 30P input; (2) L6 30R (2) L6 20R output
- SBP5000RMI2U: APC SERVICE BYPASS PANEL - 230V; 32A; BBM; IEC320 C20/HW INPUT; IEC-320 OUTPUT - (2) C19 (8) C13

Output step down transformers (coming soon)

- SRTL5KTF: APC Smart UPS Ultra SRTL 5kW tower isolation/step down transformer
- SRTL5KRMTF: APC Smart-UPS Ultra On-Line SRTL 5kVA RM step down transformer

Replacement battery cartridge (coming soon)

- SRYLBM: APC Smart-UPS Modular Ultra On-Line Lithium-ion Battery Module

Others

- SRTL006: APC Smart-UPS Ultra On-Line 15ft Extension Cable for SRTL 5K 180V XBP
- SRTL007: APC Smart-UPS Ultra On-Line L6-20 to L6-20 200mm adapter cable for SRTL 5K
- SRTL008: APC Smart-UPS Ultra On-Line L6-30 to L6-30 200mm adapter cable for SRTL 5K

Smart-UPS Ultra

SKU technical specifications



	SRTL3KRM1UC	SRTL3KRM1UNC
Topology	On-Line	
Output		
Output power capacity	3000VA/3000W/ 125VAC 2880VA/2880W/ 120VAC	
Nominal output voltage	120V, 125V	
Output voltage distortion	2% at full load	
Output frequency (sync to mains)	50/60 Hz ± 3 Hz (auto sense follow Input AC freq.) 50 or 60 ± 1Hz (battery mode)	
Waveform type	Sine Wave	
Output connections	(5) NEMA 5-20R, L5-30R with Pigtail cable	
Switched outlet group	Yes	
Efficiency green mode	97%	
Input		
Nominal input voltage	120V, 125V	
Input frequency	50/60Hz +/- 3Hz	
Input connections	Mains Cord with L5-30 Plug	
Input voltage range for full load operation	125 ~ 145VAC (3000 Watt)	
Batteries and runtime		
Battery type	Lithium-ion	
Runtime (3000W/ 1500W)	4 min / 10 min	
External battery	SRTL50RMBP1U-LI (connect up to 5 external battery packs)	
Communications and management		
Interface port(s)	USB-B, RJ-45, Ethernet, EPO	USB-A, USB-B, Ethernet, Universal I/O, EPO
Network management	SmartConnect, Modbus over TCP/IP	Network Management Card Embedded
Control panel	Auto-rotating, multicolor high resolution LCD with virtual touch keys	
Physical		
Net HxWxD	43mm (1.7in) x 432mm (17in) x 560mm (22in)	
Net weight	35lbs (15.9kg)	
Environmental		
Operating environment	32 – 104 °F (0 – 40 °C)	
Operating elevation	0-10000 feet (0-3000 meters)	
Storage temperature	5 – 113 °F (-15 – 45 °C) short term storage	
Storage relative humidity	0 – 95%, non-condensing	
Storage elevation	0-50000 feet (0-15000 meters)	
Conformance		
Regulatory approvals	UPS: UL 1778-5, CSA C22.2 NO. 107.3-14, “cULus” FCC Part 15 subpart B Class A, IECS 003 Issue 7 Battery Pack and RBC: UN 38.3, UL 1973, “cRUus” (RBC) Electronic circuits and software controls in the battery pack are evaluated as per UL 60730-1	
Standard warranty	5-Year UPS and batteries	

*External battery cable adds 5" to the depth

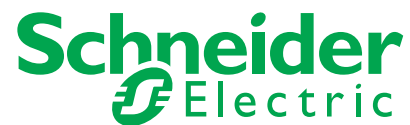
Smart-UPS Ultra



SKU technical specifications

	SRTL5KRM2UT
Topology	On-Line
Output	
Output power capacity	4900VA/4900W @ 208V 5000VA/5000W @ 240V
Nominal output voltage	208V, 240V
Output voltage distortion	(Full R Load) 1%
Output frequency	50/60Hz \pm 3Hz (auto sense), 50/60Hz \pm 0.1Hz user selectable 50/60Hz \pm 3 Hz user selectable
Waveform type	Sine Wave
Output connections	(2) L6-20R with DPCB 20A, (2) L6-30R
Efficiency green mode	98.5%
Input	
Nominal input voltage	208V, 240V
Input frequency	40 - 70Hz
Input connections	Mains Cord with L6-30P attached to UPS
Input voltage range for full load operation	187 ~ 275 V (\pm 5V)
Batteries and runtime	
Battery type	Lithium-ion
Runtime (5000W/2500W)	5 min / 12 min
External battery	SRTL180RM2UBP (connect up to 10 external battery packs)
Communications and management	
Interface port(s)	USB-A, Ethernet, Universal I/O, EPO
Network management	Network Management Card Embedded
Control panel	Auto-rotating, multicolor high resolution LCD with virtual touch keys
Physical	
Net HxWxD	86mm (3.4in) x 432mm (17in) x 795mm (31.3 in)
Net weight	30 kg (61.1 lbs)
Environmental	
Operating environment	32 – 104 °F (0 – 40 °C)
Operating elevation	0-10000 feet (0-3000 meters)
Storage temperature	5 – 113 °F (-15 – 45 °C) short term storage
Storage relative humidity	0 – 95%, non-condensing
Storage elevation	0-50000 feet (0-15000 meters)
Conformance	
Regulatory approvals	UPS: UL 1778-5, CSA C22.2 NO. 107.3-14, "cULus" FCC Part 15 subpart B Class A, IECs 003 Issue 7 Battery Pack and RBC: UN 38.3, UL 1973, "cRUus" (RBC) Electronic circuits and software controls in the battery pack are evaluated as per UL 60730-1
Standard warranty	5-Year UPS and batteries

Life Is On



Learn more today!

apc.com/smart-ups-ultra

Schneider Electric

One Boston Place
Floor 27
Boston, MA 02108
United States
www.apc.com

February 2022

©2022 Schneider Electric. All Rights Reserved.

Schneider Electric | Life Is On is a trademark and the property of Schneider Electric SE, its subsidiaries, and affiliated companies.

• 998-21402800_GMA-US

PRESIDIO



This document has been
printed on recycled paper

